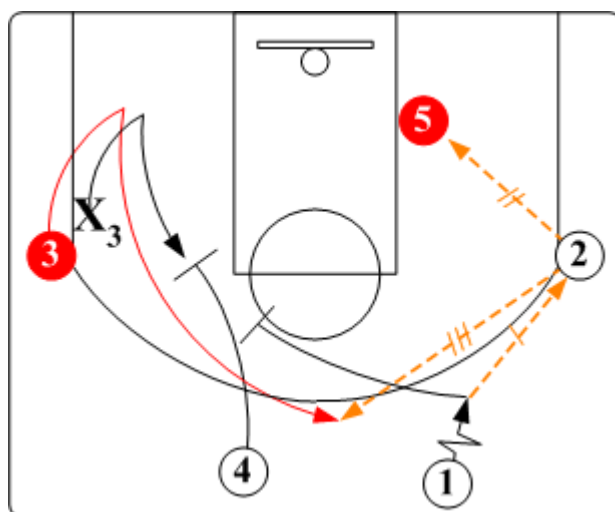


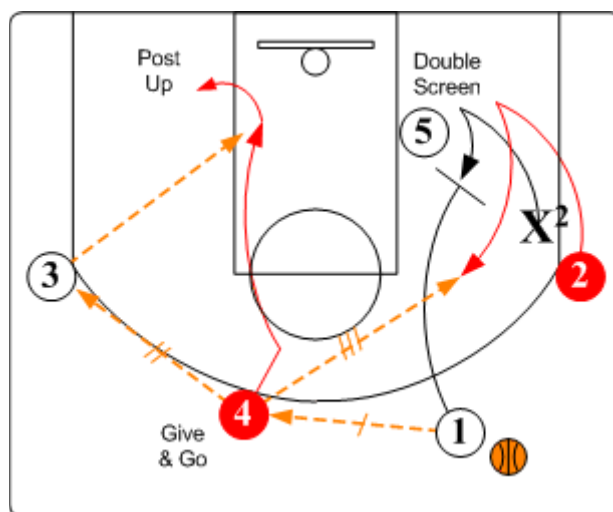
## Early Quick Posts

The Early Quick Posts set gives initial early push attack a sustained flow into half court offense without stopping denying the defense any opportunity to get set. Early Quick Posts allows for post ups, double screens, and outside shooting options,

Primary "Go To" Player: #5 Post  
Secondary "Go To" Player: #4 Trail



**Post Up.** When O1 passes ahead to O2, O1 screens away with O4 for O3. If O2 cannot shoot, drive or feed post, ball is reversed to O3 coming off tandem double screen.



**Trailer Action.** If/when O1 cannot pass ahead to wing O2, O1 passes to trailer O4, O1 sets a double screen for O2. Trailer O4 has options of shooting, driving, executing a give & go cut with O3, or passing to O2 coming off the double screen.

### Schematic Sequence:



### Continuity:

When the Quick Posts set does not create a good shot or an advantage, in order to avoid any rush or panic shots as the shot clock winds down, it is important to move directly into a final phase or continuity offense.